

INNOVATION LEADS TO VALUE



SWE 155FW MEDIUM EXCAVATOR

◆ Total weight: 14.7 - 15.4 t ◆ Engine power: 115 kW / 2 200 rpm ◆ Bucket capacity: 0.6 m³

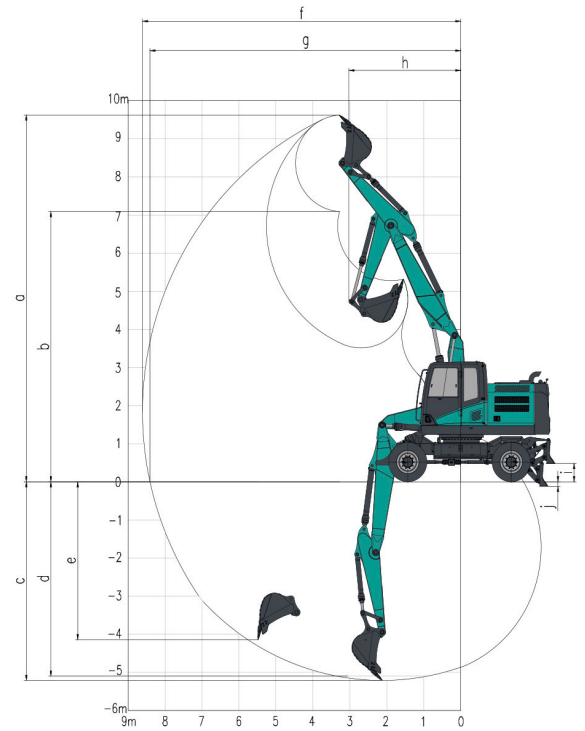


- ◆ Equipped with Cummins Euro 5 high-power engine; the latest DC air filter with long warranty period; radiator area increased by 5%, and fan diameter increased by 9%, to solve high-temperature hazards.
- ◆ Three-section arm for larger working range; 7 lines are installed as standard for multifunctional auxiliaries.
- ◆ Positive flow control system is used with faster action response and lower energy consumption.
- ◆ High-strength trapezoidal undercarriage is used with higher carrying capacity.
- ◆ Push shovel is installed as standard with optional legs. Vehicle bottom sealing plate is installed as standard to protect hydraulic pipeline.
- ◆ The volume of the fuel tank is 320L, reducing refueling frequency and improving operation efficiency.



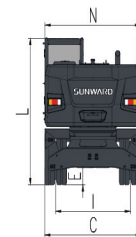
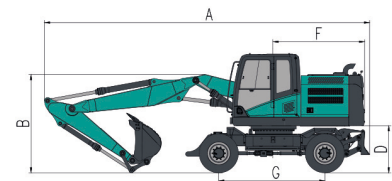
Parameters and performance of the main machine

Working weight		kg	14 700 / 15 400
Standard bucket capacity		m³	0.6
Bucket digging force		kN	100
Arm digging force		kN	84
Max. drawbar pull		kN	76
Gradeability		%	57
Ground Pressure		kPa	/
Travel Speed (Max/Min)		km/h	32 / 8.0
Slewing speed		rpm	12
Engine	Brand		Cummins
	Model		F3.8
	Power	kw/rpm	115 / 2 200
	Max. torque	N.m/rpm	620 / 1 500
	Displacement	L	3.8
Fuel tank capacity		L	300
Hydraulic oil tank capacity		L	185



Working range

	Boom length	mm	2 010 + 3 340
	Arm length	mm	2 100
a	Max. digging height	mm	9 625
b	Max. dumping height	mm	7 090
c	Max. digging depth	mm	5 210
d	Digging depth (2.44m; horizontal)	mm	5 100
e	Max. vertical digging depth	mm	4 145
f	Max. digging reach	mm	8 610
g	Max. digging reach at ground level	mm	8 405
h	Min. front slewing radius	mm	3 020
i	Max. height of dozer blade	mm	480
j	Max. digging reach of dozer blade	mm	120



Outline dimensions

A	Total length	mm	8 585	H	Track length	mm	/
B	Total height	mm	3 150	I	Shoe distance	mm	1 942
C	Total width	mm	2 515	J	Track width	mm	/
D	Counterweight clearance	mm	1 250	K	Shoe Width	mm	/
E	Chassis ground clearance	mm	365	L	Max. height of total machine	mm	3 150
F	Tail slewing radius	mm	2 515	N	Swing width	mm	2 490
G	Length to center of rollers	mm	2 800				

◆ The above parameters may be different due to product upgrading.

