

INNOVATION LEADS TO VALUE



SWE 215F MEDIUM EXCAVATOR

◆ Total weight: 21.8 t

◆ Engine power: 129 kW / 2 200 rpm

◆ Bucket capacity: 1.0 m³

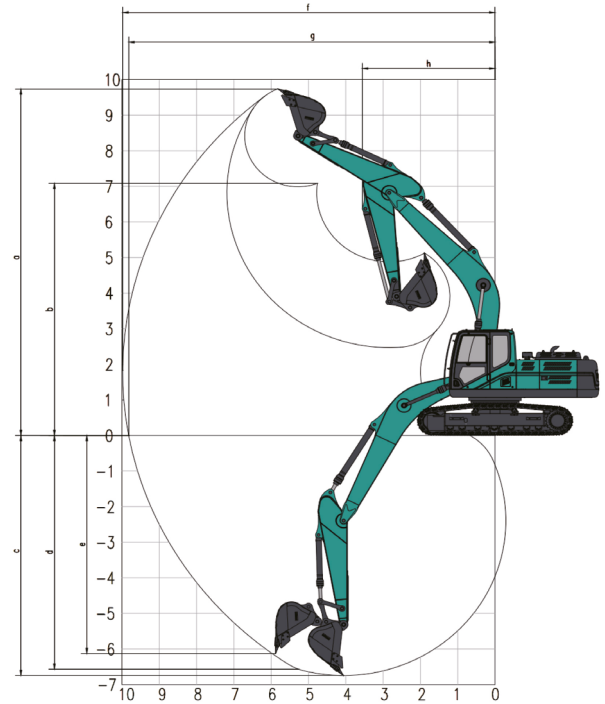


- ◆ It is equipped with Cummins 129KW engine with high power and no speed loss; and the radiator area has been increased by 27% without the need to worry about high temperature.
- ◆ 130CC large-displacement main pump is used, and positive flow large-diameter main valve is used to ensure small power loss, precise control, faster action response, and higher energy-saving. The whole vehicle has good maneuverability and smooth action.
- ◆ It is equipped with full-featured hydraulic lines as standard that are applicable to various accessories.
- ◆ Raised box large size X-type walking frame is used with excellent torsion resistance. The seat forging is also forged with high reliability. The seat diameter has been increased by 5%, which is the largest in the industry among the same capacity products. The load-bearing capacity and stability are good. Lower vehicle sealing plate is installed to protect hydraulic pipelines and ensure worry-free movement.
- ◆ It has a new style and colors. Two-stage handrails and full-channel anti-slipping plates are installed to ensure personal safety. 6 lamps and 2 cameras are used as standard for better sight during operation.
- ◆ The sedan-class cabin is equipped with 10-inch touch display with one-key start, blue tooth communication and other intelligent functions. Air suspension seat with waist support adjustment, seat expansion and seat tilting functions are installed to ensure the comfort of the driver during operations on slopes. In addition, seat with heating and ventilation functions could also be selected.



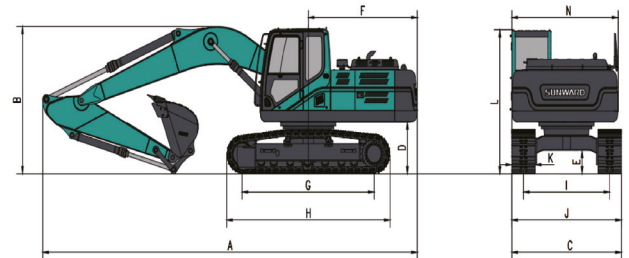
Parameters and performance of the main machine

Weight of whole machine		kg	21 800
Standard bucket capacity		m ³	1
Bucket digging force		kN	155
Arm digging force		kN	110
Max. drawbar pull		kN	193
Gradeability		%	70
Ground Pressure		kPa	47.06
Travel Speed(Max/Min)		km/h	5.2 / 3.3
Swing speed		rpm	11.8
Engine	Brand		Cummins
	Model		B6.7
	Power	kw/rpm	129 / 2 200
	Max torque	N.m/rpm	881 / 1 300
	Displacement	L	6.7
Fuel tank capacity		L	400
Hydraulic oil tank capacity		L	300



Working range

	Boom length	mm	5 700
	Arm length	mm	2 920
a	Max. digging height	mm	9 745
b	Max. dumping height	mm	6 980
c	Max. digging depth	mm	6 635
d	Digging depth (2.44m; horizontal)	mm	6 460
e	Max. vertical digging depth	mm	6 050
f	Max. digging reach	mm	9 915
g	Max. digging reach at ground level	mm	9 745
h	Min. front slewing radius	mm	3 530



Outline dimensions

A	Total length	mm	9 560	H	Total track length	mm	4 260
B	Total height	mm	3 150	I	Track gauge	mm	2 200
C	Total width	mm	2 800	J	Track width	mm	2 800
D	Counterweight Clearance	mm	1 070	K	Shoe width	mm	600
E	Chassis ground clearance	mm	480	L	Max height of total machine	mm	2 990
F	Tail slewing radius	mm	2 880	N	Upper-carriage width	mm	2 710
G	Length to center of rollers	mm	3 465				

♦ The above parameters may be different due to product upgrading.

