

INNOVATION LEADS TO VALUE



SWE 335F LARGE EXCAVATOR

◆ Total weight: 33.6 t

◆ Engine power: 209 kW / 2 000 rpm

◆ Bucket capacity: 1.7 m³

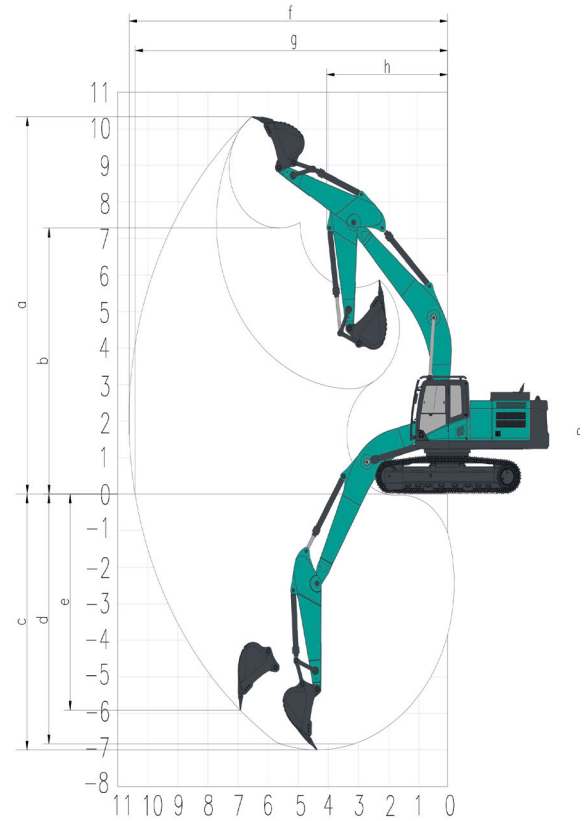


- ◆ The new appearance of the new generation of F series family could create a magnificent style of the whole machine. More mining elements are added to modeling design to show its beauty and power at the same time.
- ◆ The machine is equipped with a powerful 209kW Cummins engine. High efficiency and energy saving hydraulic system is used, and the bucket digging force could reach 214KN, which can be easily handled in heavy-duty working conditions.
- ◆ High-efficiency, large-displacement hydraulic system is used, and 2.9m short bucket bar and 1.7m³ double-curve reinforced bucket are provided to realize the perfect proportion of the working device according to the working conditions.
- ◆ Heavy load working device with 36t class die forging support. The lower vehicle assembly is installed with 36t class chassis system, and the four wheels and one belt are reliable and durable, with excellent carrying capacity.



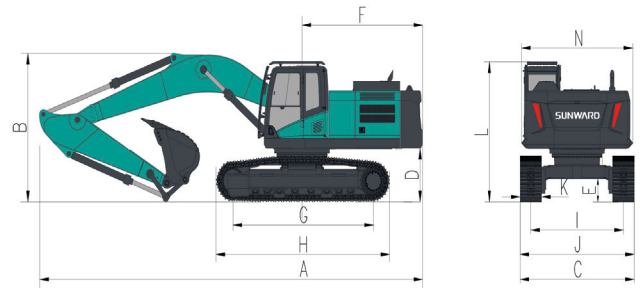
Parameters and performance of the main machine

Weight of whole machine	kg	33 600
Standard bucket capacity	m ³	1.7
Bucket digging force	kN	214
Arm digging force	kN	165
Max. drawbar pull	kN	297
Travel speed (Max/Min)	km/h	5.8 / 4
Gradeability	%	70
Ground pressure	kPa	63.8
Swing speed	rpm	9
Engine	Brand	Cummins
	Model	B6.7-129-SV
	Power	kW/rpm 209 / 2 000
	Max torque	N.m/rpm 1 280 / 1 500
	Displacement	L 6.7
Fuel tank capacity	L	600
Hydraulic oil tank capacity	L	400



Working range

	Boom length	mm	6 150
	Arm length	mm	2 900
a	Max. digging height	mm	10 330
b	Max. dumping height	mm	7 280
c	Max. digging depth	mm	7 010
d	Digging depth (2.44m; horizontal)	mm	6 840
e	Max. vertical digging depth	mm	5 920
f	Max. digging reach	mm	10 570
g	Max. digging reach at ground level	mm	10 370
h	Min. front slewing radius	mm	4 005



Outline dimensions

A	Total length	mm	10 866	H	Total track length	mm	4 860
B	Total height	mm	3 600	I	Track distance	mm	2 590
C	Total width	mm	3 190	J	Track width	mm	3 190
D	Counterweight Clearance	mm	1 235	K	Track shoe width	mm	600
E	Chassis ground clearance	mm	530	L	Max. height of cab	mm	3 600
F	Platform tail slewing radius	mm	3 520	N	Upper-carriage width	mm	3 110
G	Length to center of rollers	mm	3 930				

◆ The above parameters may be different due to product upgrading.

