

INNOVATION LEADS TO VALUE



SWE 400F LARGE EXCAVATOR

◆ Total weight: 39.2 t

◆ Engine power: 254 kW / 2 100 rpm

◆ Bucket capacity: 2.0 m³



- ◆ **Powered by Cummins for strong performance**
The 254 kW high-power reserve engine delivers robust power; the 249 kN bucket digging force easily handles heavy-load conditions.
- ◆ **New Design, Mighty and Dominant**
The new generation family-style F series features a brand new appearance, with a majestic and powerful overall design, incorporating more mining elements, combining beauty and strength.
- ◆ **Efficiency First, High Efficiency and Energy Saving**
A large-displacement pump, large-passage main valve, equipped with an independent cooling system; a 2.8 m arm is paired with a 2.0 m³ large bucket capacity dual-curve rock bucket, and the crushing system is matched with a 175 efficient energy-saving breaker.
- ◆ **Reliable and Durable, Diamond Quality**
Heavy-duty working devices with large box section, supported by 40-ton grade forged components; 40-50 ton class extended and widened undercarriage assembly, the reliable and durable carrying capacity is multiplied by the four wheels and the track link.
- ◆ **Comfortable Control and Easy Maintenance**
The all-new cab with a 10.1-inch large touch LCD display, one-touch start and centralized full-key switch; the direct-flow air filter makes maintenance more convenient.



Parameters and performance of the main machine

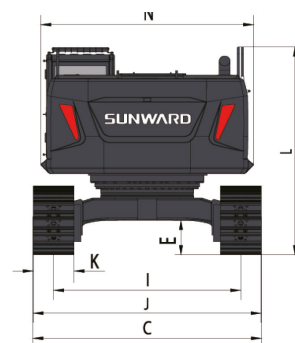
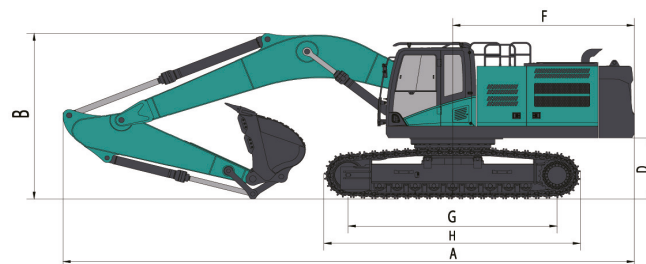
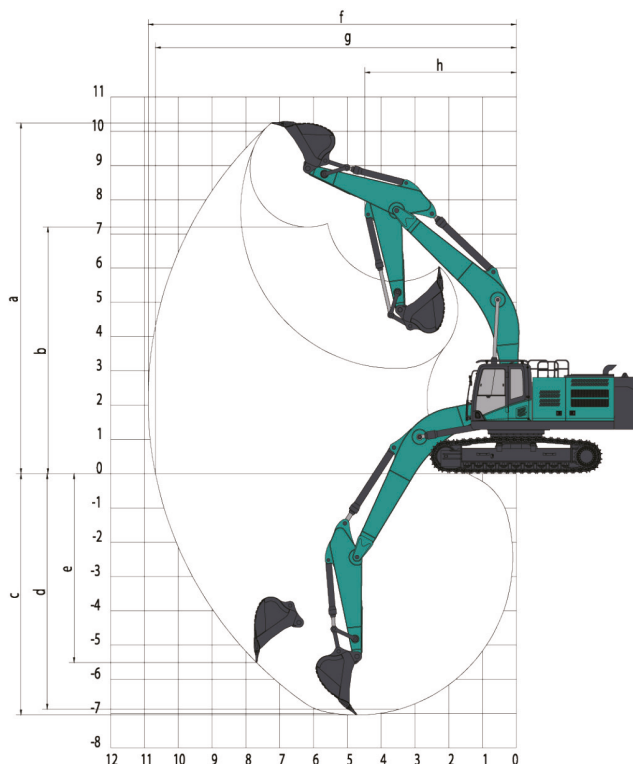
Working weight		kg	39 200
Standard bucket capacity		m³	2.0
Bucket digging force		kN	249
Arm digging force		kN	207
Max. drawbar pull		kN	348
Travel speed (Max/Min)		km/h	5.2 / 3.0
Gradeability		%	70
Ground pressure		kPa	69.6
Swing speed		rpm	9.6
Engine	Brand		Cummins
	Model		L9S5-C338
	Power	kW/rpm	254 / 2 100
	Max Torque	N.m/rpm	1 526 / 1 400
	Displacement	L	8.9
Fuel tank capacity		L	700
Hydraulic Oil Tank		L	475
Main Pump	Brand		Hengli
	Model		V90N180
	Type		Variable plunger pump
	Max Flow	L/min	2 x 306
	Working Pressure	MPa	34.3
Pilot pump	Type		Gear pump
	Max Flow	L/min	25.5
	Working Pressure	MPa	3.9
AUX-1 pipe flow (breaker)		L/min	306
AUX-2 pipe flow		L/min	36

Working range

	Boom length	mm	6 500
	Arm length	mm	2 800
a	Max. cutting height	mm	10 375
b	Max. loading height	mm	7 175
c	Max. digging depth	mm	7 020
d	Digging depth (2.44m; horizontal)	mm	6 855
e	Max. vertical digging depth	mm	5 500
f	Max. digging reach	mm	10 925
g	Max. digging reach at ground level	mm	10 705
h	Min. front slewing radius	mm	4 510

Outline dimensions

A	Total length	mm	11 400	H	Total track length	mm	5 115
B	Total height	mm	3 630	I	Shoe distance	mm	2 740
C	Total width	mm	3 350	J	Track width	mm	3 340
D	Counterweight Clearance	mm	1 300	K	Shoe Width	mm	600
E	Chassis ground clearance	mm	550	L	Max height of total machine	mm	3 330
F	Tail swing radius	mm	3 615	N	Swing width	mm	3 120
G	Track length on the ground	mm	4 160				



♦ The above parameters may be different due to product upgrading.

